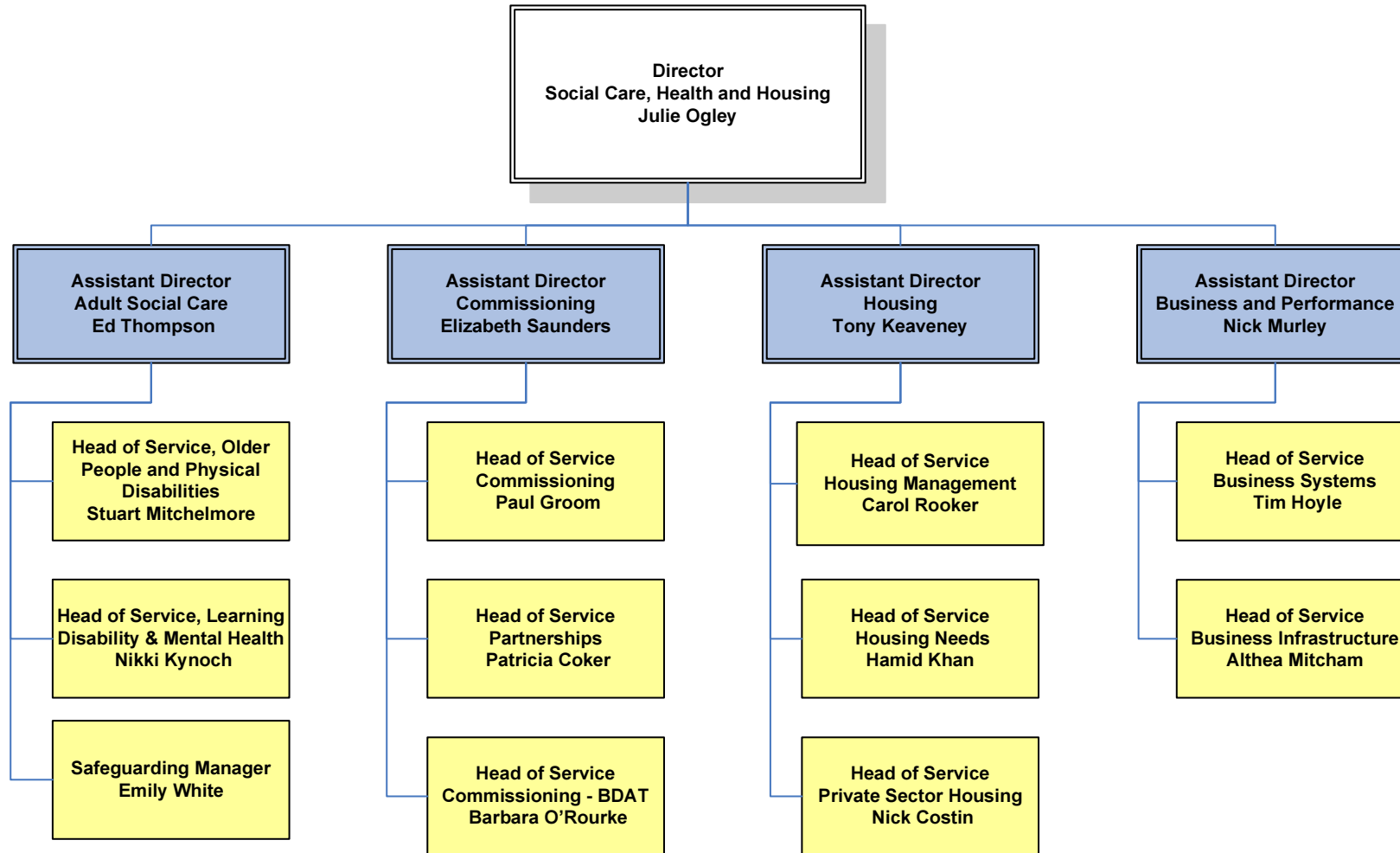




Adult Social Care, Health and Housing Overview

Our Vision: We will help our residents live their own lives, enjoy good health, be safe, independent and play a full and active part in the life of the community

Structure



A new landscape

Time of transition for adult social care, with financial challenges - “Shrinking pool of resources” and opportunities in the years ahead.

A new agenda for adult social care based on a power shift from the professional to the customer by ‘Putting People First’ and changing the way we work.

A new approach

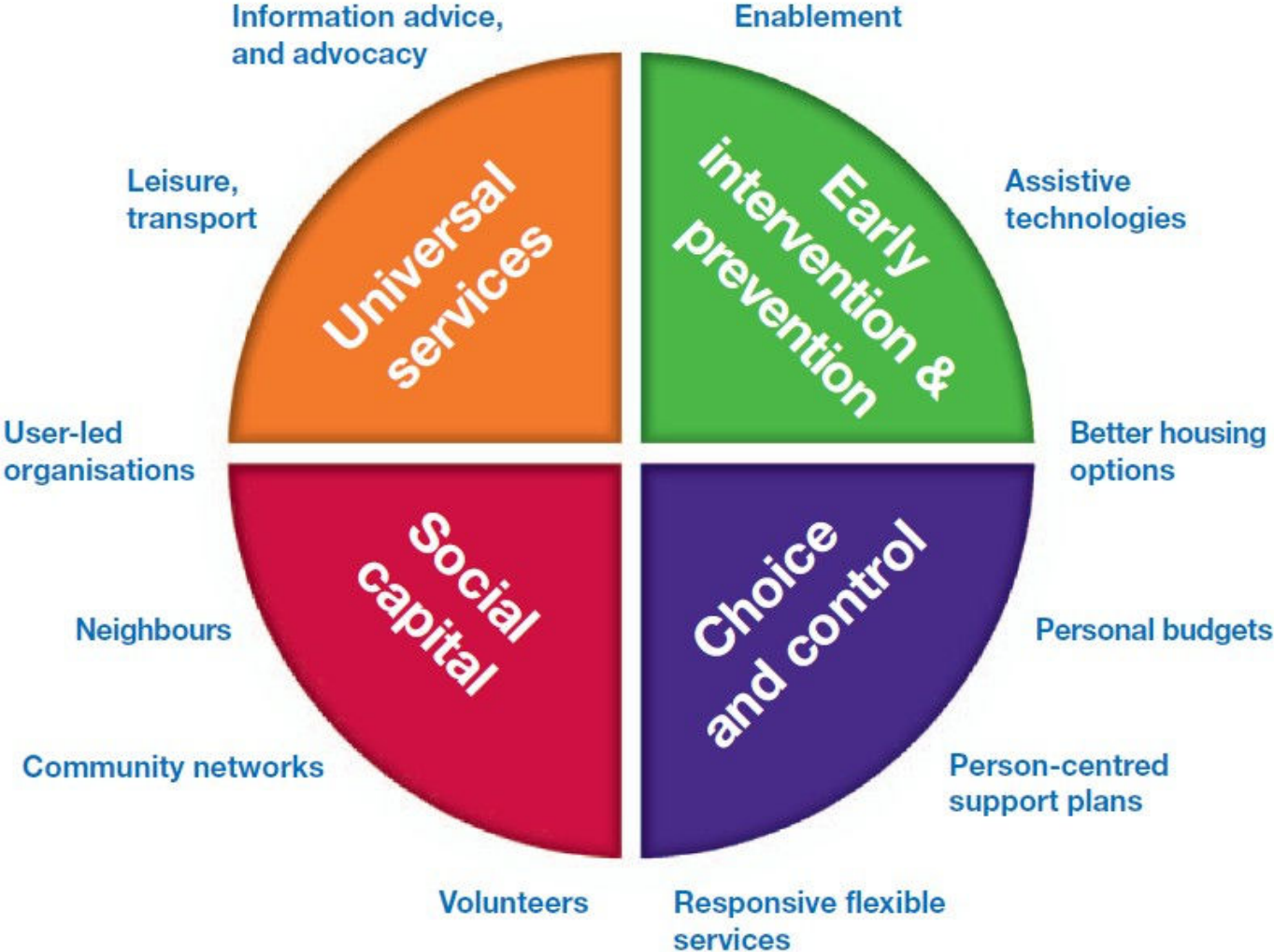
Demand for services from an increasing ageing population is not financially sustainable;

30% increase of those aged 75+

48% increase of those aged 85+

A shift from providing institutionalised services to personalised services

Putting People First - Personalisation



Safeguarding – Everybody’s Business, Our Responsibility

Improving basic safeguarding outcomes encompasses:

1. Effective preventative work (for example, awareness in the public, staff and people using services)
2. Good quality local services that work to prevent abuse and afford people dignity and respect
3. Personalised social care responses that enable people to weigh up the risks and benefits of their options
4. Effective response systems and services that enables the person to define the outcomes they want and address the cause of harm or abuse and the damage that it has done
5. Effective access to criminal and/or restorative justice and support services. People get extra support to challenge and change harmful or abusive situations, and arrange services and supports that meet the outcomes they want

Key Projects

- Adult Social Care Recovery
- Efficiencies
- Council House Financing
- BUPA Reprovision
- Housing Repairs Project
- Safeguarding of Vulnerable Adults Peer Review

Examples of Efficiencies include:

- More effective deployment of council staff across the reablement service and extra care sheltered housing:
 - To deploy existing care workers to the councils reablement service
 - A new external provider to deliver high quality care services to customer in Extra Care homes
- Streamline the in-house Domiciliary Care, and Assessment and Resettlement services for people with learning disabilities.
- Development of a joint approach with the Health Service.
- Harmonisation of Housing Needs Service.
- Reduction in usage of residential and nursing care services.
- Modernisation of day services for adults with learning disabilities to meet the personalisation agenda